

Resale home at

Pine Meadows

8473 Wellington 19, R.R. #1, Belwood Ontario N1B 1J0

226.821.1688 or 1.800.561.0612



White Bark Way

Elora "B" with approximately 1434 sq. ft.

This very popular "Elora" open style home is situated in a cul de sac location and has a lovely front porch where you can enjoy your morning coffee. As you enter this home you will notice the new Spiced Pecan laminate flooring in the front hallway, living and dining room. The kitchen has a large window that overlooks the private treed back yard with interlocking stone patio. Just off the kitchen there is a pocket door that opens up to the laundry/mud room with direct access to the 1 1/2 car garage. You will like the master bedroom with a walk-in closet and an ensuite with shower and linen closet. There is a good sized 2nd bedroom and master bathroom with tub/shower unit.

This well kept home must be seen to be appreciated.

Current monthly payments:

Land Lease:	\$0.00	2016 Yearly Taxes:	\$0.00
Maintenance:	\$0.00		
TOTAL	\$0.00	Heating, hydro and A/C – average	\$0.00/month

Next scheduled increase shown as of January 1, 2017.

List PriceSample

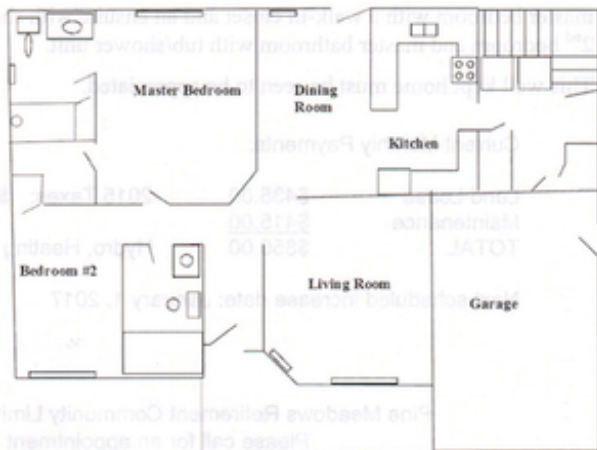
Pine Meadows Retirement Community Limited acting as agent for vendor.

Features of the Home

- Large front deck overlooking cul de sac location
- Brand new Spiced Pecan flooring in front hallway, living room and dining room
- Entry from garage to laundry/mud room
- 2 bedrooms and 2 bathrooms
- Master bedroom with walk-in closet and ensuite with a shower and linen closet
- Main bathroom with a tub/shower unit
- Laundry on the main floor
- New roof in 2014
- New screen doors front and back
- 1 and 1/2 car garage with newer garage door

Included in Sale of House

- All existing window coverings including drapes and blinds
- All appliances (stove, refrigerator -- new 2014, microwave, dishwasher, washer, dryer)
- All existing light fixtures
- Hot water heater
- Fridge in basement
- Shelves and workbench in basement



Room Sizes

Living Area:	14'9" x 15'1"
Dining Room:	11'9" x 15'1"
Kitchen:	9' x 15'1"
Master Bedroom:	12'10" x 15'1"
Bedroom 2:	10'9" x 11'8"
Garage:	13'3" x 21'8"